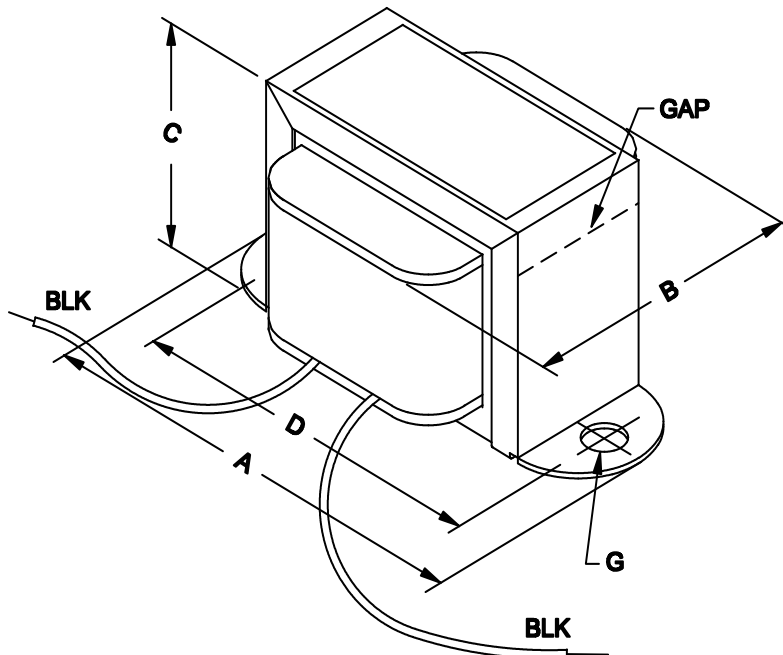




D.C. Reactors or Filter Chokes Low to Medium Current

Features

- Economical “open bracket” - channel mount.
- Tolerance of 15% on both inductance & resistance.
- Inductances measured at rated D.C. current.
- Minimum 5” long leads.
- Units will exhibit less inductance at slightly higher currents or more inductance at lower currents.
- Perfect for high voltage power supply filtering.
- Every unit is Hipot tested (100%) at 1,500 VAC
- Units are vacuum impregnated with polyurethane varnish for quiet and long life operation.



Mechanical	
A	2.38" / 60.5 mm
B	1.38" / 35.1 mm
C	1.38" / 35.1 mm
D	2" / 50.8 mm
G	0.19" / 4.8 mm
Weight	0.3 lbs / 0.14 kg
Electrical	
Inductance (+/- 15%)	6mH
D.C. Current	2.0 A
Resistance (+/- 15%)	0.3 ohms
Maximum Operating Volt (D.C.)	400V