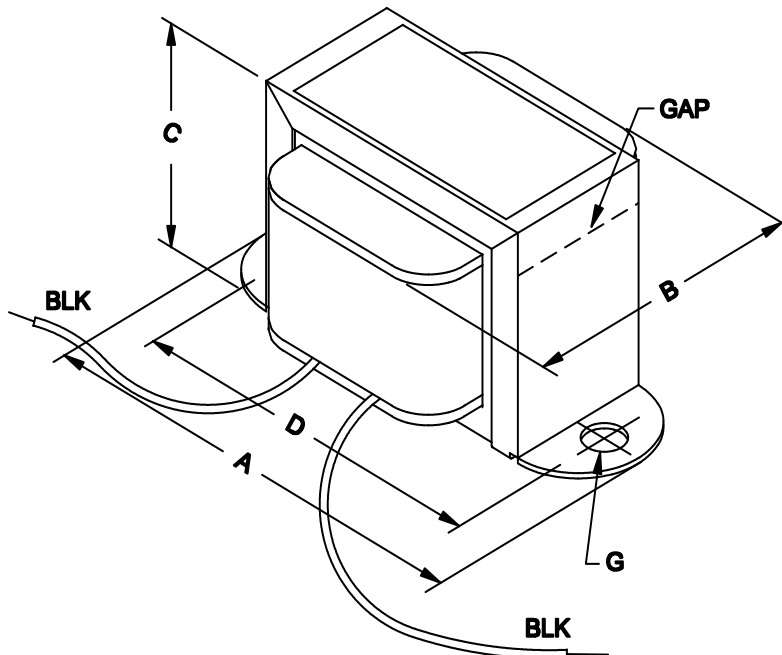




D.C. Reactors or Filter Chokes Low to Medium Current

Features

- Economical “open bracket” - channel mount.
- Tolerance of 15% on both inductance & resistance.
- Inductances measured at rated D.C. current.
- Minimum 5” long leads.
- Units will exhibit less inductance at slightly higher currents or more inductance at lower currents.
- Perfect for high voltage power supply filtering.
- Every unit is Hipot tested (100%) at 1,500 VAC
- Units are vacuum impregnated with polyurethane varnish for quiet and long life operation.



Mechanical	
A	1.63" / 41.4 mm
B	0.88" / 22.4 mm
C	0.81" / 20.6 mm
D	1.38" / 35.1 mm
G	0.13" / 3.3 mm
Weight	0.1 lbs / 0.05 kg
Electrical	
Inductance (+/- 15%)	0.6H
D.C. Current	100 ma.
Resistance (+/- 15%)	86 ohms
Maximum Operating Volt (D.C.)	300V